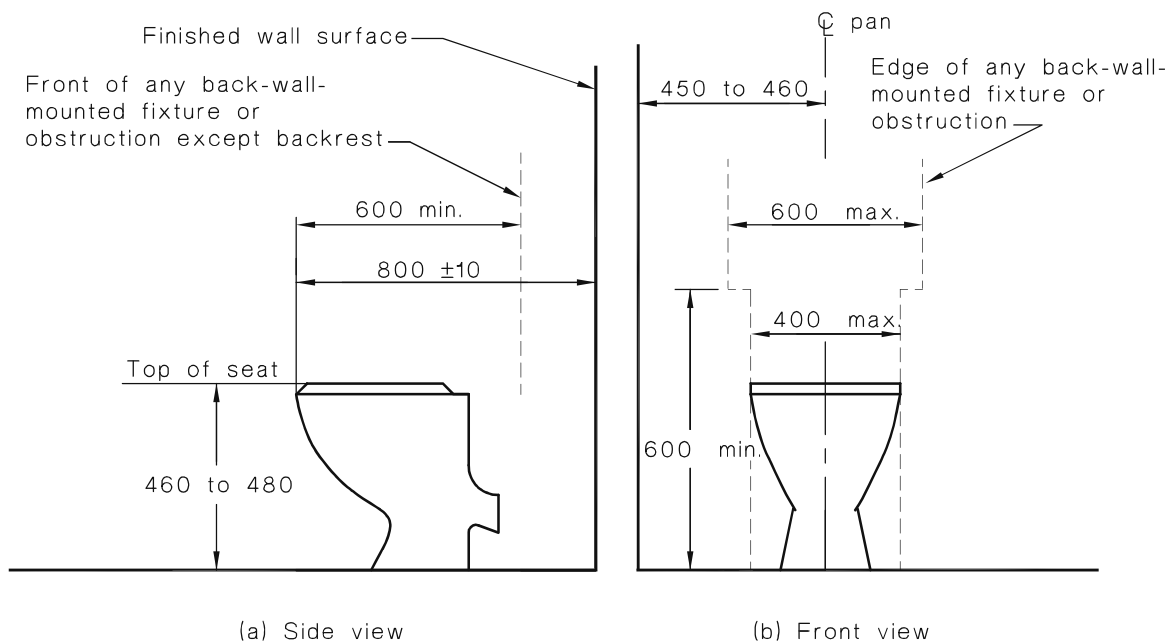


- (b) Lever handles shall have not less than 50 mm clearance from an adjacent surface.
- (c) Where separate taps are provided for hot and cold water, the hot water tap shall be placed to the left of the cold water tap for horizontal configurations, or above the cold water tap for vertical configurations.
- (d) Where hot water is provided, the water shall be delivered through a mixing spout.

15.2.2 WC pan clearances

WC pan clearances, including set-out, seat height and seat width shall be as shown in Figure 38.

A1



NOTES:

- 1 For the purpose of dimensioning, the front of the WC pan has been taken as the datum plane.
- 2 The dimension of 800 ± 10 mm from the front of the WC pan to the wall is a critical dimension.

DIMENSIONS IN MILLIMETRES

FIGURE 38 WATER CLOSET PAN CLEARANCES, SEAT HEIGHT AND SEAT WIDTH

15.2.3 Seat

A toilet seat shall be provided on accessible toilets. The toilet seat shall—

- (a) be of the full-round type, (i.e., not open fronted) and with minimal contours to the top surface;
- (b) be securely fixed in position when in use;
- (c) have seat fixings that create lateral stability for the seat when in use;
- (d) be load-rated to 150 kg; and
- (e) have a minimum luminance contrast of 30% with the background (e.g., pan, wall or floor against which it is viewed).