

CREATED ON 16/11/2022

CARE COMPLIANT

**KNOW
HOW
INSTALLED**

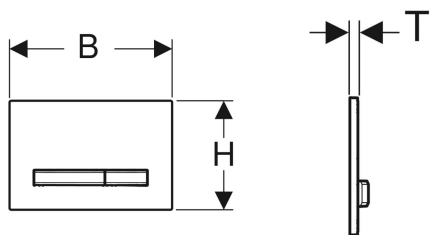
Table of contents

Geberit Sigma50 actuator plate for dual flush, metal colour chrome-plated	3
Geberit Sigma20 actuator plate for dual flush	4
Geberit Type 01 remote flush actuation Type 01, pneumatic, for dual flush, for Sigma concealed cistern 8 cm, concealed actuator, protruding	5
Geberit Sigma concealed cistern 8 cm, 4.5 / 3 litres	6

Geberit Sigma50 actuator plate for dual flush, metal colour chrome-plated



Example image



Application purposes

- For flush actuation with Sigma concealed cisterns

Characteristics

- Front actuation

- Easy-to-clean coated actuator buttons
- Sound-absorbing actuator rods, tool-free fast adjustment

Technical data

Actuation force | < 20 N

Scope of delivery

- Mounting frame
- 2 distance bolts
- 2 actuator rods

Art. no.	Reece no.	Colour / surface	Material designation	B	H	T
115.788.11.2		Base plate and buttons: chrome-plated Cover plate: white	Die-cast zinc / plastic	24.6 cm	16.4 cm	1.3 cm

Accessories

- Geberit DuoFresh module with automatic actuation and insert for Geberit DuoFresh stick, for Sigma concealed cistern 8 cm
- Geberit extension set for Sigma, Omega and Kappa concealed cisterns

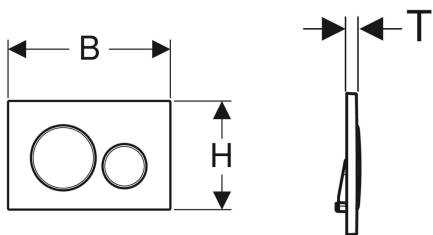


- The colour and structure of natural products may vary
- Delivery time: 6 weeks for art. nos. 115.788.JV.2 and 115.788.JX.2

Geberit Sigma20 actuator plate for dual flush



Example image



Application purposes

- For flush actuation with Sigma concealed cisterns

Characteristics

- Front actuation

Scope of delivery

- Mounting frame
- 2 distance bolts

- Sound-absorbing actuator rods, tool-free fast adjustment

Technical data

Actuation force | < 20 N

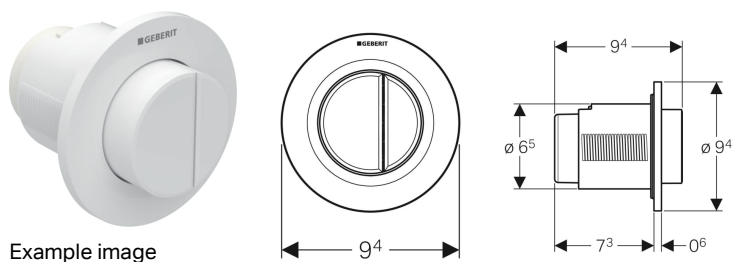
- 2 actuator rods

Art. no.	Colour / surface	Material designation	B	H	T
115.882.16.1	Plate and buttons: black matt coated, easy-to-clean coated Design rings: black	Plastic	24.6 cm	16.4 cm	1.2 cm

Accessories

- Geberit extension set for Sigma, Omega and Kappa concealed cisterns

Geberit Type 01 remote flush actuation Type 01, pneumatic, for dual flush, for Sigma concealed cistern 8 cm, concealed actuator, protruding



Application purposes

- For pneumatic remote flush actuation of Geberit concealed cisterns
- For dual flush
- For solid and drywall construction
- For concealed installation
- For Sigma concealed cisterns 8 cm

Characteristics

- Round design
- Actuator buttons protruding
- Can be combined with Geberit actuator plates for single flush and stop-and-go flush or Geberit cover plate

Technical data

Actuation force | < 25 N

Scope of delivery

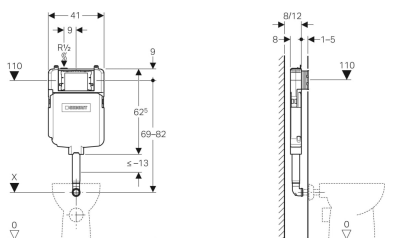
- Actuator
- Pneumatic flushing device
- Pneumatic hose, length 2 m
- Conduit pipe, length 1.7 m
- Flush-mounting box with protection cover
- Fastening material

Art. no.	Colour / surface	Material designation
116.045.11.1	white alpine	Plastic

Geberit Sigma concealed cistern 8 cm, 4.5 / 3 litres



Example image



Application purposes

- For drywall construction
- For installation in part or room-height prewall installations
- For installation in room-height installation walls
- For floor-standing WCs
- For single flush, dual flush or stop-and-go flush

Characteristics

- Range 2016
- Concealed cistern with front actuation
- Concealed cistern, fully insulated against condensation
- Cistern fulfils standard requirements in accordance with AS 1172.2:2004
- Immediate post flush possible with factory setting
- Flush bend fitted

Scope of delivery

- Water supply connection Rp 1/2" - R 1/2", compatible with MF, with integrated angle stop valve and hand wheel
- Protection box for service opening
- Flush bend 90°
- Flush bend extension, ø 45 mm

- Tool-free installation and maintenance work on concealed cistern
- Water supply connection on the top left
- Water supply connection, dezincification-resistant
- Protection cover box for service opening protects against moisture and dirt
- Protection box for service opening can be cut to length, suitable for surface-even actuator plates

Technical data

Flow pressure	10-1000 kPa
Maximum operating temperature, water	25 °C
Flush volume, factory setting	4.5 and 3 l
Flush volume large, adjustment range	4.5 / 6 / 7.5 l
Flush volume small, adjustment range	3-4 l

- Fastening for flush bend
- 2 sleeves made of EPDM
- Protection plug
- Fastening material for drywall

Art. no.	B	H	T
109.795.00.1	41 cm	62.5 cm	8 cm

Geberit Pty Ltd

Unit 8a, 6-8 Byfield Street,
2113 Macquarie Park NSW
Australia

sales.au@geberit.com

F: +61 (2) 9889 7855

T: +61 (2) 9889 7866

<https://www.geberit.com.au>